



iOptical/iDoc IDA Installation Guide

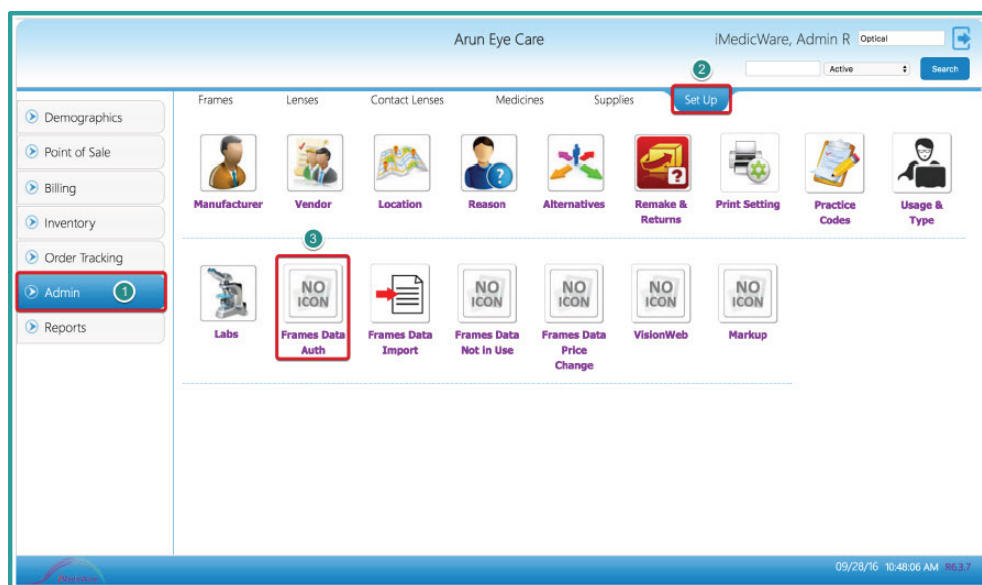
iOptical/iDoc Frames Data IDA Installation Guide

Integration

After you have set up your Frames Data account, log in to iOptical.

Then,

1. Go to Admin
2. Go to Set Up
3. Click Frames Data Auth



Enter your Frames Data Subscriber ID, shipping zip code, and billing zip code. Then, click Save.

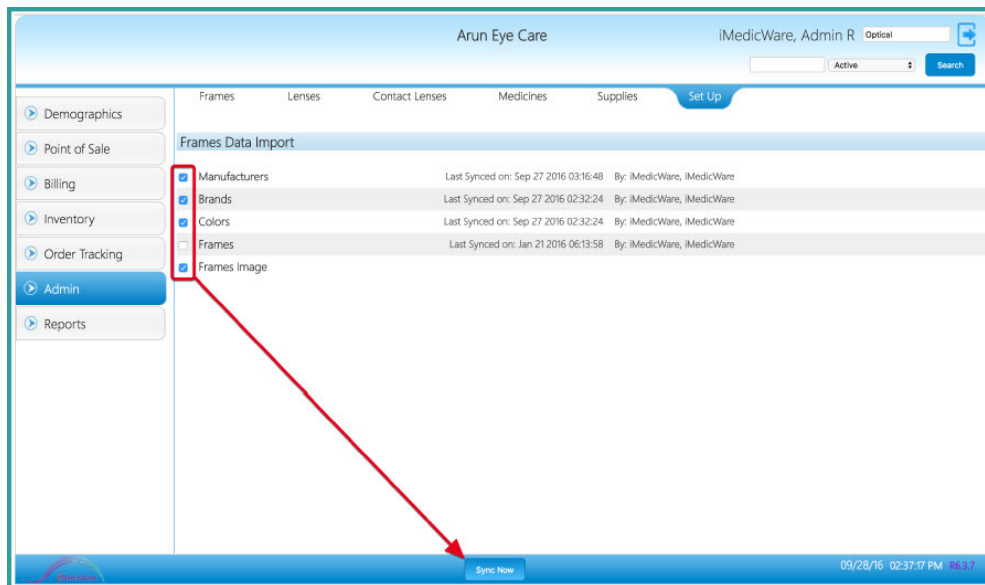
The screenshot shows the iMedicWare Admin interface for 'Arun Eye Care'. The 'Set Up' tab is selected, and the 'Frames Data Credentials' section is active. The form contains three input fields: 'Frames Data Subscriber ID' (empty), 'Subscriber shipping zip code' (07728), and 'Subscriber billing zip code' (07728). A red arrow points to the 'Save' button at the bottom right of the form. The left sidebar shows navigation options: Demographics, Point of Sale, Billing, Inventory, Order Tracking, Admin (selected), and Reports. The top right shows the user 'iMedicWare, Admin R' and a search bar.

After you have linked your account, you can import information from Frames Data by clicking Frames Data Import.

The screenshot shows the iMedicWare Admin interface for 'Arun Eye Care'. The 'Set Up' tab is selected, and the 'Frames Data' section is active. The 'Frames Data Import' option is highlighted with a red box and a red arrow. The interface displays various data categories with icons: Manufacturer, Vendor, Location, Reason, Alternatives, Remake & Returns, Print Setting, Practice Codes, Usage & Type, Labs, Frames Data Auth, Frames Data Import, Frames Data Not in Use, Frames Data Price Change, VisionWeb, and Markup. The left sidebar shows navigation options: Demographics, Point of Sale, Billing, Inventory, Order Tracking, Admin (selected), and Reports. The top right shows the user 'iMedicWare, Admin R' and a search bar.

Check the data categories you would like to update, then click Sync Now. You should perform a sync quarterly, to ensure your optical system has the most up-to-date data.

Syncing data can take several hours, so it is recommended to do this when your optical shop is not open.



Congratulations! You have now successfully loaded Frames Data IDA into iOptical or iDoc by iMedicWare.

If you run into any problems, feel free to reach out to iMedicWare's technical support team using their Support Portal available [here](#).