

Installing Frames Data SPEX UPC Monthly Updates

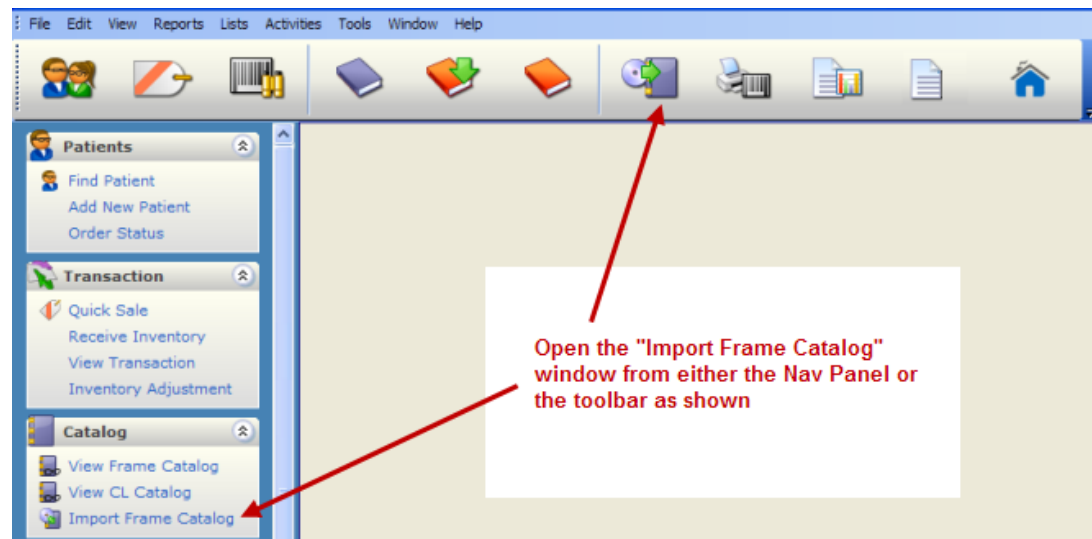
Install Frames Data SPEX CD-ROM Disc

Users with current subscriptions to the Frames Data digital frame catalog should verify that they are receiving the “SPEX UPC” edition. FlexInventory™ and FlexOptical™ are only compatible with this version, and are not compatible with the Frames Data “Quarterly” product.

Step 1. Insert the Frames Data disc into the CD-ROM drive on a computer running the FlexInventory™ or FlexOptical™ program. Note: it may be faster to perform the update operation on the computer hosting the Flexsys database.

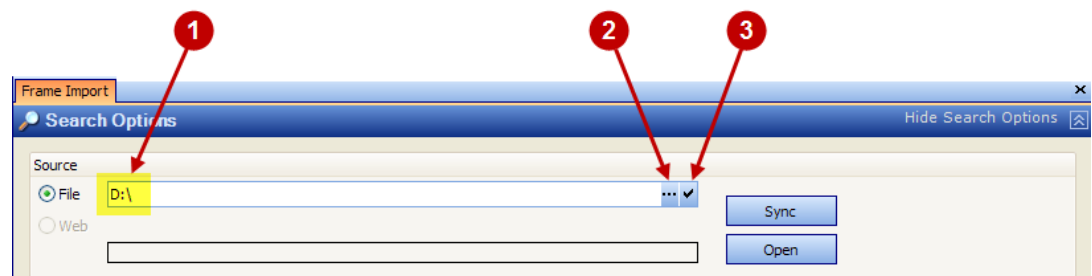
Step 2. With the FlexInventory™ or FlexOptical™ program running, open the “Import Frame Catalog” window using either the Nav Panel menu selection or toolbar button as shown in Figure 1.

Figure 1



Step 3. Refer to Figure 2. Within the “Frame Import” window the file path box (❶) should identify the path for the CD-ROM drive containing the Frames Data disc. To change the path, click on the small button (❷) and navigate to the appropriate CD-ROM drive, then click on the confirm button (❸) to save the path setting.

Figure 2



Note: in the example above drive D is listed in the path box. Your computer may assign a different drive letter to the CD-ROM drive. In this case substitute the correct drive letter in the path statement.

Synchronize Frame List Information

Each month Frames Data publishes new and updated information about the eyeglass frames. This information is arranged by **Manufacturer**, **Brand** and **Collection** names. These names are maintained as lists within FlexInventory™ and FlexOptical™. The “Sync” operation will keep these lists up to date each month.

Step 1. Refer to Figure 3. Click on the “Sync” button (❶). Depending on the computer’s processor speed this operation may take up to 5 minutes. A message window will appear confirming that the operation is complete. Do not perform other operations while the “Sync” operation is in process.

Figure 3



Update Collection Information

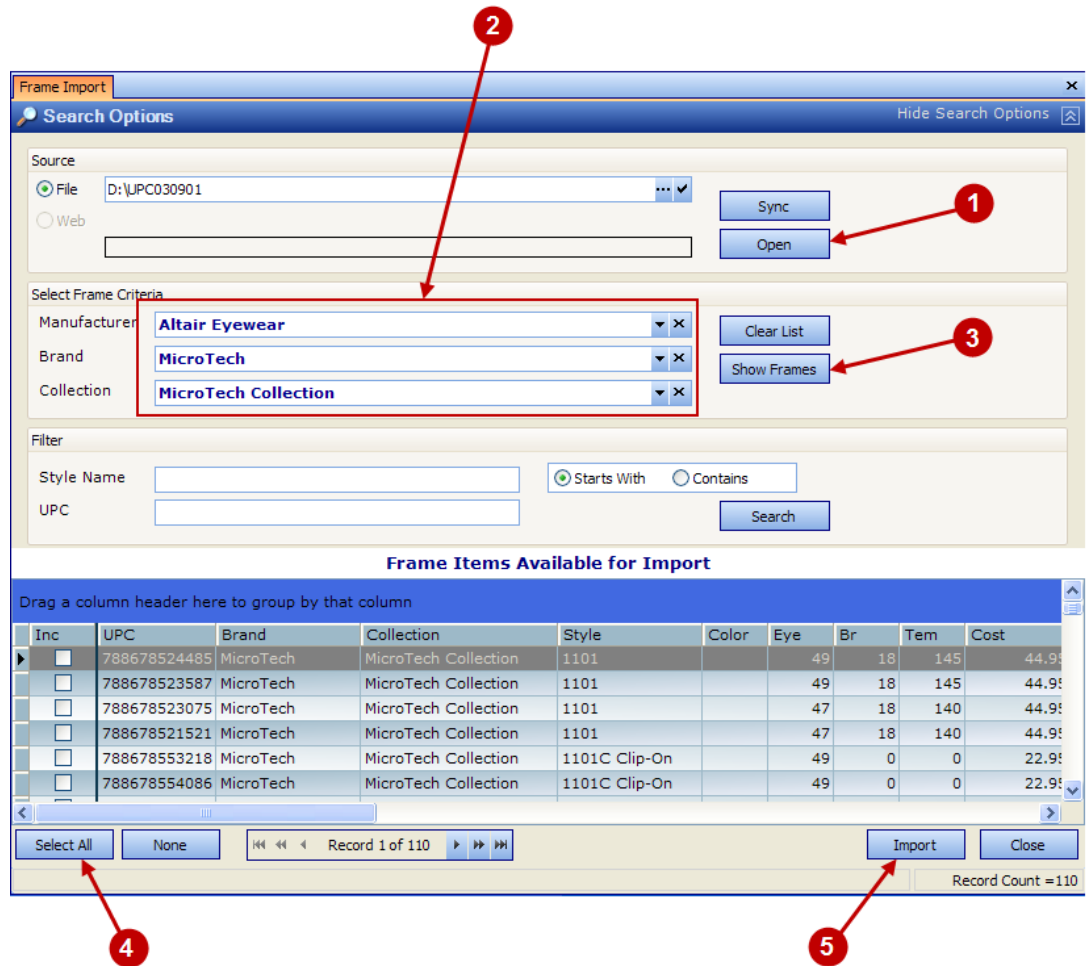
Frame Collection information may now be imported (for adding new collections to the Frame Catalog) or existing collections may be updated to incorporate changes in the latest Frames Data monthly edition. Refer to Figure 4 when performing the collection update operation.

Step 1. To update existing Frame Collection data, first select the “Open” button (❶). Then select the **Manufacturer**, **Brand**, and **Collection** records to be updated (❷). Note: the Manufacturer, Brand, and Collection names may be selected from the list either by using the drop-down feature or by typing the desired name directly into the box. The tab key can be used to move from one field to the next. Because the lists contain many records it is generally faster to use the keyboard to make these selections.

Step 2. Click the “Show Frames” button (❸) to list all of the individual frame records within the selected collection(s).

Step 3. It is recommended that all records contained within a collection should be imported into the Frame Catalog in order to maintain a complete set of catalog records. To accomplish this first click the “Select All” button (❹). Then click the “Import” button (❺). A message window will appear confirming that the import operation is complete. Note: it is also possible to import only selected frame records although this will produce an incomplete collection of frame styles, sizes and colors. Instead of clicking “Select All”, individually select the desired records by marking the check box next to the desired record(s), then click the “Import” button as described above.

Figure 4



Further assistance may be obtained by contacting the Flexsys support department:

Flexsys Vision Care Software
support@flexdx.com
408-821-4004

END OF DOCUMENT